



A D A R A

R E S I D E N C E S

AR

# EQUILIBRIUM, RESTORED.

Clad in warm fluted terracotta, bright concrete and bluestone, Adara is an address in perfect balance. Here, twelve wonderfully spacious two- and three-bedroom residences share an enviable location in one of Melbourne's top blue-chip neighbourhoods. Each one is carefully composed to afford a lifestyle that's relaxed and rewarding, where light and graceful interiors offer a seamless flow from private to open living spaces.

Beautiful by nature, symmetry is more than just pleasing to the eye. In living, it provides a sense of calm and purpose, where every element is exactly where it needs to be. Adara adopts this understanding perfectly, with two buildings that sit side by side – each with their own lift and stairwell – framing a central and emphatic cobblestone entrance way. What emerges is a uniquely balanced composition; one that's secluded, peaceful and exclusive. A place to call home.



# DESIGNED FOR BALANCE



ARTIST IMPRESSION

Large, open floorplans provide flexibility to suit your way of living, so you can compose your living space – or any space for that matter – just as you like it.



Private ground level terraces to relax and unwind, thoughtfully landscaped by memLa, complement Glen Iris' leafy surrounds.

ARTIST IMPRESSION

# ILLUMINATED LIVING





Cook, dine, converse and laugh beneath a soft golden glow. The simple beauty of light-play comes to life through carefully designed windows that enlighten Adara's open plan kitchens.



A quiet retreat from the bustle of everyday, luxuriously finished and immaculately detailed. Adara's flexible spaces provide endless opportunity, so your second bedroom could take on a new life as a studio or spacious office.



# HARMONY AND GRACE





A free-standing bath in each residence is the ultimate bathroom luxury, complete with clever storage, dual vanities and mirrors.

ARTIST IMPRESSION



ARTIST IMPRESSION

# OPULENT MATERIALITY



ARTIST IMPRESSION



ARTIST IMPRESSION

Timeless and sophisticated, Adara's finishes have an enduring quality - ageless for years to come. Modern porcelain benchtops, glossy chrome tapware and sleek matte black accents that are not only elegant, but practical too. Plush, level loop wool carpets add softness underfoot, natural in both colour and feel.

Premium Whispair rangehoods and VZUG kitchen appliances make cooking at home a breeze, whilst Italian Calacatta Oro stone gives bathrooms a luxurious and refined edge, where grey tones marble a one-of-a-kind pattern across a natural white base.

# VERDANT LUXURY

Nestled within Melbourne's leafy inner eastern corridor, Glen Iris neighbours the top-tier suburbs of Malvern and Camberwell, and is characterised by quiet and understated opulence. Luxury here is twofold; proximity to Melbourne's CBD and a number of elite schools is matched by a bounty of natural parklands and tranquil walks.



In Glen Iris and surrounds, you'll find a number of Melbourne's leading public and private schools. Korowa Anglican Girls', Sacre Coeur and Caulfield Grammar School are all within a five-minute drive from Adara, boasting impressive results and college alumni.



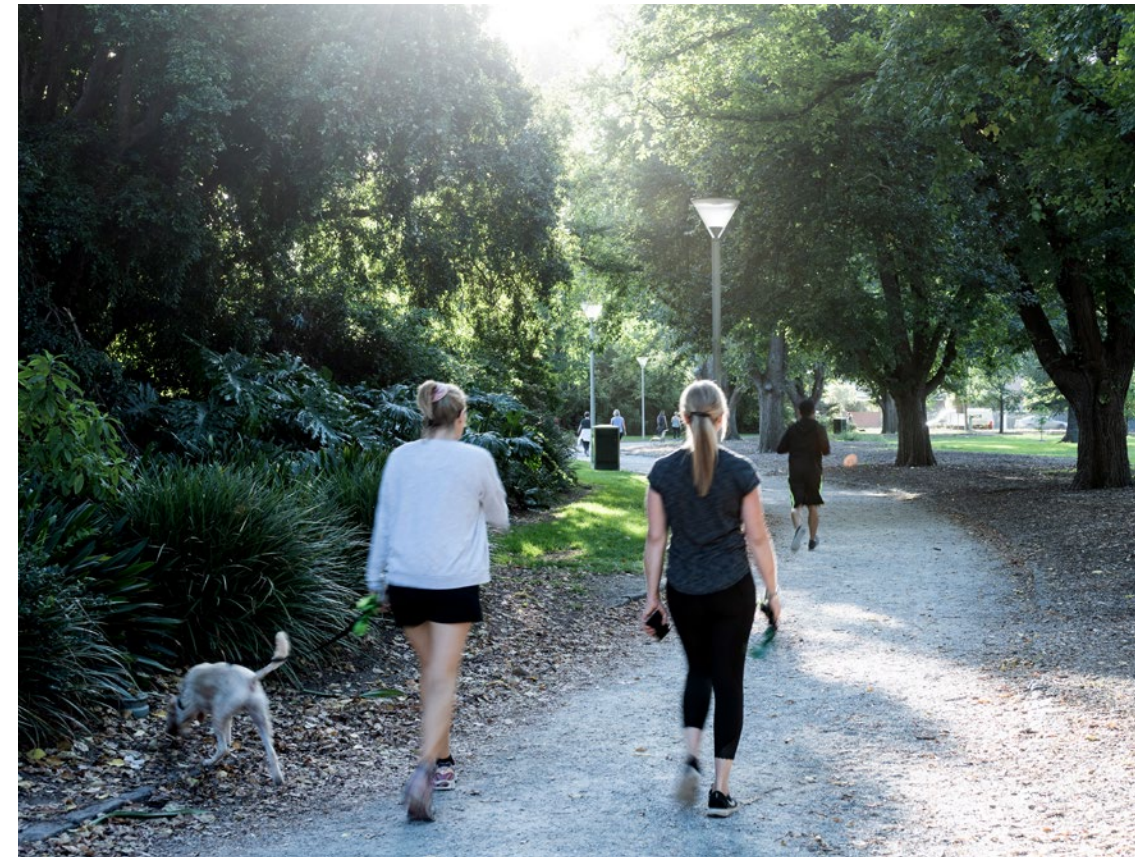
# WISELY POSITIONED



Route 6 and 72 trams are poised to take you from your residence on Wills St to key destinations throughout Melbourne's inner east and beyond, whilst Glen Iris railway station is a mere five-minute walk from home – and will have you in the CBD in 20 minutes.



# A NATURAL OUTLOOK



Proximity to outdoor spaces brightens the everyday, instantly making us feel calm and relaxed. Gardiners Creek runs through the heart of Glen Iris; a natural spine that winds its way through residential streets and parklands, imbuing the neighbourhood with the recreation and tranquillity only nature can provide. Cyclists, runners, yoga enthusiasts and furry friends alike can enjoy Glen Iris' myriad of open green spaces – no matter the activity.



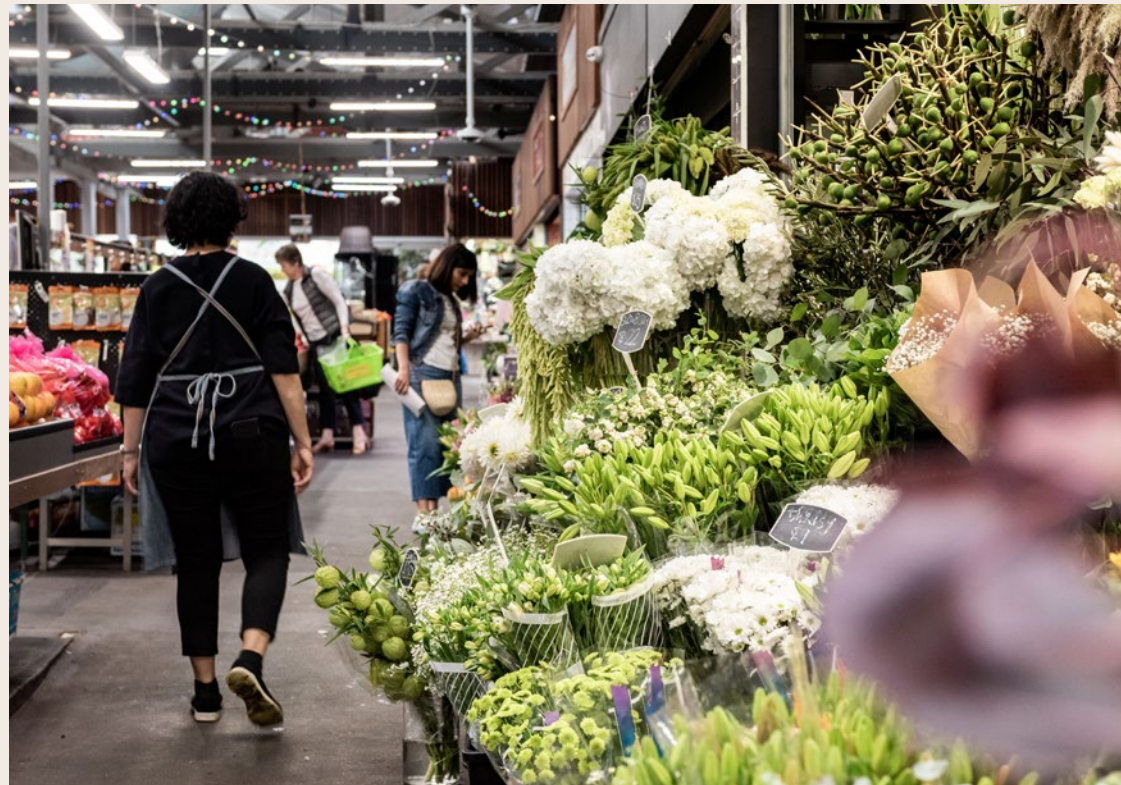
# CRAFTED AND REFINED



When it comes to a midweek nightcap with friends or a Sunday morning brunch, Glen Iris is focused on quality not quantity. Cafés, eateries and bars offer local charm and character in spades, where regulars are greeted by name. Italian cakes are baked daily by the family at Mr Tucci, and the team at Tom Pockett Cellars offer expert wine pairings tailored to your palate.



# SIMPLE SERENITY



A little further afield, you'll find an array of retail and entertainment delights. Gather fresh produce, meat, fish and flowers from Camberwell's bustling Fresh Food Market to bring your spacious kitchen at home to life. Or, visit the historic Rivoli Cinemas with its standout 1940s art deco façade, to watch the latest arthouse flick.





# A BESPOKE TEAM OF INDUSTRY EXPERTS



## Irene Tzefronis

Property and design have been a life-long passion of mine, fuelled by the excitement of witnessing architectural concepts evolve and come to life.

A building that defines quality, uniqueness and beauty; my aim is to always produce a space that is practical and comfortable to use, and a home we can all be proud to live in.

From esteemed architectural and interior design teams, through to experienced and dedicated builders and sales experts, I engage a team of like-minded passionate professionals in all projects. Collaboratively, we are able to deliver Adara Residences in its serene sounds and high-quality format.

## John Demos Architects

Founded in Melbourne, John Demos Architects is known as a champion advocate for its clients – a reputation consolidated over 30 years of professional practice and an exceptional record of accomplishing results for highly complex projects. The prodigious output extends across projects of all types and scale including urban renewal, hospitality, corporate offices, residences, medium to high density apartments, aged care and nursing homes.

The firm's projects are inherently innovative, in particular advancing new methodologies in modular and prefabricated construction without compromise to architectural merit. This approach is currently spearheading projects in Australia, Europe, China and the Middle East.

In this and other projects, John Demos Architects works with interior design firm, Kathy Demos Pty Ltd in a long-standing collaboration between brother and sister. Kathy Demos has an acute appreciation of the possibilities of architecture to create sensory environments that enhance the way people experience the places around them.

## Farey & Co.

Farey & Co. is a boutique Property agency specialising in low to medium density, high quality residential developments. Our founder Jarrod Farey brings a wealth of knowledge with over 16 years' experience in the sales and marketing of off-the-plan properties. We pride ourselves on our deep understanding of the property market along with our exceptional service that is tailored to your specific needs. We align ourselves with like-minded developers who share a similar ethos to bring you unrivalled properties in highly desirable locations across Melbourne.

# CONTACT

Jarrold Farey  
0401 607 642  
[jarrod@fareyandco.com.au](mailto:jarrod@fareyandco.com.au)  
[adararesidences.com.au](http://adararesidences.com.au)

Disclaimer: While all reasonable care has been taken in preparation of this brochure and the information contained in it, purchasers should not rely on that information and must rely on their own investigations, enquiries and inspections before signing any contract of sale. This brochure is provided for information purposes only and does not form part of the contract of sale. No liability is accepted for any direct or consequential loss or damage arising out of any reliance upon this brochure. Illustrations and photographs are for presentation purposes and are to be regarded as indicative only.

AR